



2K QHD Dual Channel Dash Camera

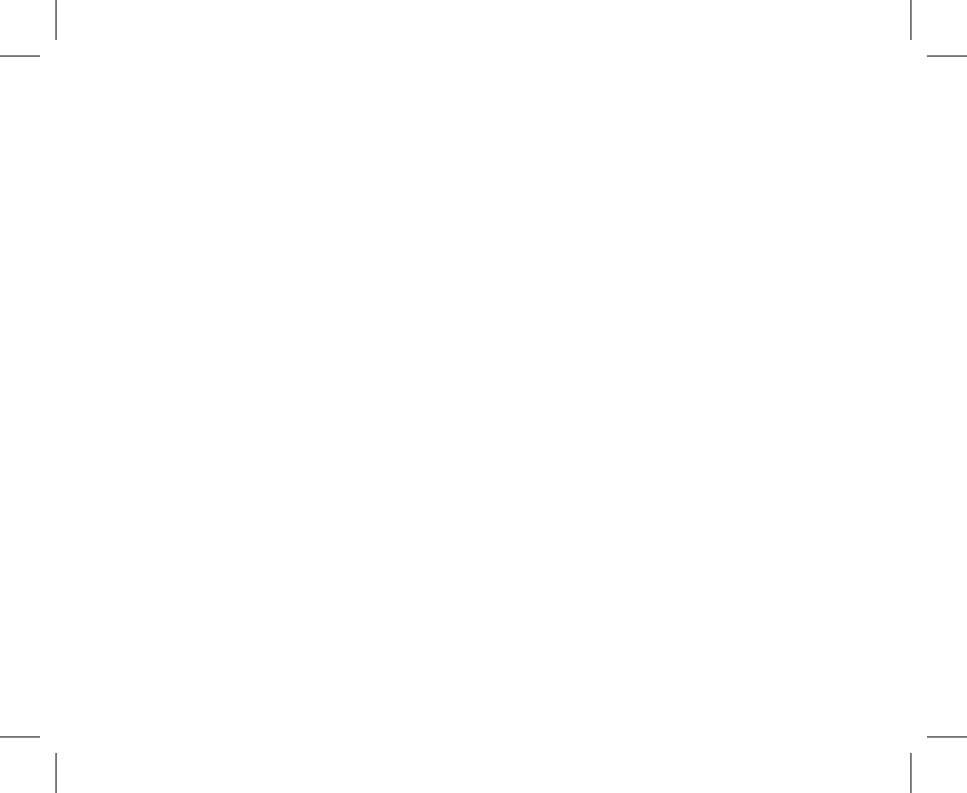
With GPS Logger, WiFi and FHD Rear Camera



KPT-2200

USER MANUAL





CONTENTS

1.0 CAUTION	3
2.0 CHARGING WARNING	3
3.0 MICRO SD CARD WARNING	4
3.1 Formatting The Inserted Micro SD Card	4
4.0 INTRODUCTION	5
WILL UPDATE TO SAME ICONS AS ON PACKAGING WHEN AVAILABLE FOR CONSISTENCY	6
5.0 PACKAGE CONTENTS	6
6.0 PRODUCT OVERVIEW	7
7.0 INSTALLATION INSTRUCTIONS	8
7.1 KPT-2200 installation	8
7.2 Rear Camera installation	9
8.0 SOUND ALERTS	11
8.1 Real-Time Audio Road Safety Alerts*	11
8.1.1 Speed Camera Alert	11
8.1.2 Blackspot Alert	11
8.1.3 School Zone Alert	12

8.1.4	Railway Crossing Alert.....	12
9.0	QUICK KEY FUNCTIONS.....	12
9.1	LED Indicator	13
10.0	DOWNLOADING AND INSTALLING THE KPT-LINK APP	13
11.0	KPT-LINK APP OPERATION	16
11.1	App Video Playback	16
11.2	Downloading videos from the App.....	17
11.3	Sharing videos on Social Media.....	17
11.4	KPT-LINK App Settings.....	18
12.0	WARRANTY TERMS & CONDITIONS	20
13.0	NOTES	24

1.0 INTRODUCTION

Thank you for purchasing a Kapture Dash Camera. We have designed this product so you can have a better driving experience with enhanced safety features. Our products, like most after-market safety enhanced devices, are designed to assist and aid the driver, not to replace the manual function of the person operating the vehicle. Please read through these instructions before attempting to install this product.

For the latest manual and product updates, please visit our website at **www.kapturecam.com.au** or **www.kapturecam.co.nz**

2.0 CAUTION

- Ensure you are using your Dash Camera within your countries' road laws. Please make sure you are familiar with your local road legislation before use.
- Please set the time and date before you use this device to record.
- The notifications given by the Dash Camera are suggestions only, please drive according to the actual road conditions.
- The system is to be used only for non-commercial use, within the limits permitted by the relevant laws.
- Avoid using the Dash Camera in the vicinity of any devices that emit radio interference (eg. microwave ovens).
- It is considered normal for the Dash Camera to get warm during use.

3.0 CHARGING WARNING

- Always charge the Dash Camera using the provided charger. Improper charging of the Dash Camera may result in failure.
- Do not dispose of the Dash Camera in a fire.
- Please dispose of the Dash Camera within the limits of your local regulations.

4.0 MICRO SD CARD WARNING

This Dash Camera can only be used with Micro SD Cards, Class 10 or above with 32GB - 128 GB storage capacity, (not included). Please format your Micro SD Card before use.

NOTE:

- Formatting the Micro SD Card will delete all information on the inserted Micro SD Card and prepare the Card for use with the car Dash Camera.*
* A Micro SD Card is not included and will need to be purchased separately.

4.1 FORMATTING THE INSERTED MICRO SD CARD

Please download the KPT-LINK App and connect your Dash Camera with the downloaded App by following the steps as mentioned on page 13.

Please enter the Settings Section and press "Format SD Card".

The Dash Camera will format the Micro SD Card and will provide an audio notification that the Micro SD Card has been formatted.

Alternatively, once the Micro SD Card is inserted into the Dash Camera and connected to power, please press the blue power Button on the Dash Camera 3 times rapidly. This will format the Micro SD Card.

NOTES ON INSTALLATION

1. It is advised that the Dash Camera is installed near the rearview mirror, at the top centre of the windshield for optimal operation.
2. Make sure that the lens is within the range of the windscreen wiper to ensure a clear view when it rains.
3. Do not touch the lens with your fingers. Finger prints left on the lens will result in unclear videos or photos. If photos or videos are blurred, please clean the lens gently with a microfibre cloth.
4. Only use the included charging cable to power the Dash Camera.

5.0 PACKAGE CONTENTS



KPT-2200
Dash Camera x1



Electrostatic
Film x2



3M Adhesive
Mount x1



12/24V Power
Adaptor x1



Spare 3M
Adhesive x1



User Guide x1

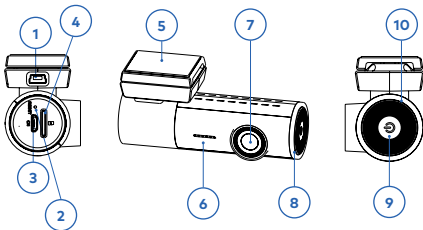


Rear Camera
with 8m Cable x1

6.0 PRODUCT OVERVIEW

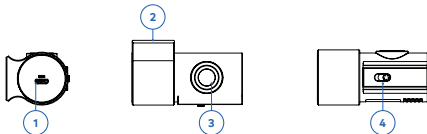
FRONT CAMERA

1. Mini USB Connector
(for power)
2. Reset Button
3. Micro USB Connector
(Connect to rear camera)
4. Micro SD Card Slot
5. Adhesive Sticker
6. Speaker Hole
7. Camera Lens
8. Recording Indicator LED
9. Power Button/WiFi ON
and OFF/Lock file
10. Microphone



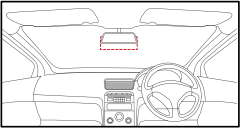
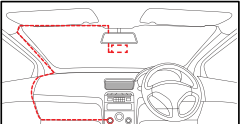
REAR CAMERA

1. Micro USB Connector
(Connect to Front
Camera)
2. Adhesive Sticker
3. Camera Lens
4. Mirror Image Switch



7.0 INSTALLATION INSTRUCTIONS

7.1 KPT-2200 INSTALLATION

1. **RECOMMENDED:** Select the electrostatic film from the box and install it on the front windshield in the recommended position as shown below. Please wipe the glass before installation and push out the bubbles between the static film and the glass before installation.
2. Remove the protective film from the KPT-2200 and position the DVR in the middle of the electrostatic film (optional). Press down on the base of the bracket by hand for 30 seconds to ensure that the sticker adhesive is attached to the electrostatic film, and adjust the camera by rotating the barrel until it is capturing the entire road.
3. Run the KPT-2200 cable along the top of the front windshield through the A pillar and around and under the storage compartment of the passenger seat to the car's 12/24V adaptor port. Connect the 12/24V adaptor to the car power.

4. See image below for cable management.

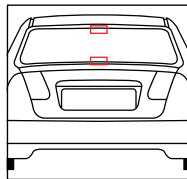


NOTE:

- The electrostatic film helps for easy removal of your Dash Camera from the windshield. Included in package contents.

7.2 REAR CAMERA INSTALLATION

1. **OPTIONAL:** Select the electrostatic film from the box and install it on the rear windshield in the recommended position as shown below. Please wipe the glass before installation and push out the bubbles between the static film and the glass before installation.

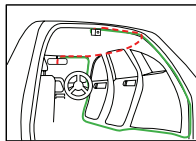


2. Remove the protective film from the rear camera base bracket and select either the top or the bottom of the rear window to position the rear camera. Press down on the base of the bracket by hand for 30 seconds to ensure that the sticker adhesive has attached to the electrostatic film.
3. Connect the rear camera to the front camera using the cable provided. Either run the cable through the roof lining or under the carpet underlay as shown below. The rear camera can rotate 360° degrees depending on the position and type of installation method.

Method 1: Thread the rear camera cable along the top of the roof lining and connect it to the KPT-2200 Dash Camera.

Method 2: Lift up the car carpet and run the rear camera cable along the underlay of the carpet and connect it to the KPT-2200 Dash Camera.

4. Adjust the camera by rotating the barrel until it is capturing the entire road.



NOTE:

- While viewing live footage on the App, the rear camera will show the true rearview image, where the license plates of vehicles behind your vehicle is inverted. However, actual recorded images are horizontally flipped to capture the license plate correctly.
- If the image from the rear camera is upside down, please adjust the "Mirror Image" switch on the rear camera.

8.0 SOUND ALERTS

The KPT-2200 will provide you with sound alerts to keep you updated with the status of your Dash Camera. Audio notifications will come through the in-built speaker of the Dash Camera as per below:

- Recording Started/Stopped
- Turning On/Off Wi-Fi
- Emergency Recording Started/Stopped
- SD Card is being Formatted
- Please insert SD Card
- Rear Camera is not plugged in

8.1 REAL-TIME AUDIO ROAD SAFETY ALERTS*

Your Dash Camera comes with the added feature of providing real time road safety alerts. An audio warning will alert you of your actual live speed, speed limit (if applicable) and distance to the alert (eg. Speed Camera). These alerts can be individually managed or disabled from the Settings menu in the KPT-LINK App.

*** Here Maps does not support School Zone & Accident Blackspot Alerts for New Zealand.**

8.1.1 SPEED CAMERA ALERT

Fixed Speed Camera Alerts notify you of the speed limit, and the distance remaining to the location of the Speed Camera.

8.1.2 BLACKSPOT ALERT

Blackspot Alerts notify you before you enter a high accident zone.

8.1.3 SCHOOL ZONE ALERT

School Zone Alerts notify you before you enter a school zone..

8.1.4 RAILWAY CROSSING ALERT

Railway Crossing Alert gives you a warning before you approach a railway crossing.

NOTE:

- Sound Alerts can be disabled or sound can be lowered through the KPT-LINK App Volume Settings. Please refer to the App section.

9.0 QUICK KEY FUNCTIONS

By pressing the Power Button multiple times you can access several quick key functions.

OPERATION	FUNCTION	OPERATION	FUNCTION
Press and Hold for 2 seconds	Power ON/OFF Device	Quick Press x3	Format the Micro SD Card*
Press Once	ON/OFF WiFi	Quick Press x5	Reset To Default Settings^
Quick Press x2	Lock File		

* Formatting the Micro SD Card will delete all information on the inserted Micro SD Card and prepare the Card to be used with the KPT-2200.

^ Restoring to default Settings will also change the WiFi password to default **12345678**. In case you forget your WiFi's password, please reset to default Settings.

9.1 LED INDICATOR

The colour of the KPT-2200 LED Light helps to indicate the following functions.

1. **Constant red:** Not recording
2. **Constant blue:** Recording in normal mode
3. **Blue flashing:** Recording an emergency event
4. **Green flashing:** Updating firmware
5. **Constant green:** Video playback in App

10.0 DOWNLOADING AND INSTALLING THE KPT-LINK APP

The KPT-2200 needs to be used in combination with KPT-LINK App to function correctly.

All major settings on the KPT-2200 are edited through the KPT-LINK App.
The system requirements for your smartphone are noted below.

iPhone: iPhone 5 or later using iOS 8.0 and above.

Samsung Galaxy: S3 and later using Android 4.2.2 and above.

For you to correctly connect your smart device to your KPT-2200 you will need to have the KPT-LINK App from the Apple App Store or Google Play Store installed on your smartphone. You will also need to connect your smartphone to the KPT-2200's WiFi signal using your smartphone's WiFi Settings.

For Android devices: Please search KPT-LINK in the Google Play Store for installation. Alternatively you can scan the QR code found in the system Settings in your Dash Camera. You can also scan the QR code on the following page.

For iOS devices: Please search KPT-LINK in the IOS App Store for installation. Alternatively you can scan the QR code found in the system Settings in your Dash Camera. You can also scan the QR code on the following page.

For a step by step guide on connecting to your Dash Camera to your smartphone please follow the steps below.

1. On your smartphone download the KPT-LINK App from the Google Play store if you are using an Android device, or the iOS App store if you are using an iPhone. You can also scan the QR code on the following page.
2. Power up the Dash Camera and allow 2 minutes for the WiFi connection to start.
3. Once the App is downloaded and installed on your smartphone and the Dash Camera is powered up, open your smartphone's WiFi Settings and connect to the wireless connection named KPT2200.
4. When prompted enter the password 12345678

WiFi Name: KPT-2200 _XXXX (XXXX is unique number to each Dash Camera)

Password: 12345678

5. Once the connection has been made, open the KPT-LINK App. You will now be able to access the live recording screen for the front and rear cameras, stored videos, and your Dash Camera Settings.

Scan the QR code
for a direct link to
download the KPT-
LINK App.



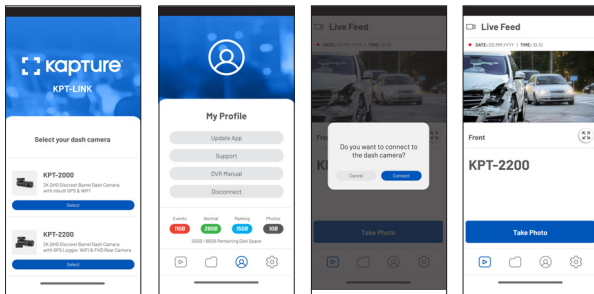
11.0 KPT-LINK APP OPERATION

To use the KPT-LINK App, your smart device will need to be connected to the Dash Camera WiFi connection. For instructions on connecting your Dash Camera to your smartphone's WiFi, please follow the steps on the previous page.

11.1 APP VIDEO PLAYBACK

For Video Playback via the App, please follow the instructions below.

1. Open the KPT-LINK App.
2. Press the Album Button.
3. Click on the Video Folder and select the video you want to view.



11.2 DOWNLOADING VIDEOS FROM THE APP

To download your Dash Camera videos, please follow the instructions below.

1. Open the KPT-LINK App.
2. Press the Album Button.
3. Select the video/videos and press the 'Download' Button.
4. The download will start and will save to your smartphone which can also be accessed through the KPT-LINK App in the folder name 'Local'.

11.3 SHARING VIDEOS ON SOCIAL MEDIA

To share videos on social media, please follow the instructions below.

1. Open the KPT-LINK App.
2. Press the Album Button.
3. Open the Local folder on the KPT-LINK App, all downloaded files can be accessed via the local folder.
4. Select the files you want to share, and then press the 'Share' Button below.
5. Select the social media Application you wish to share on.

11.4 KPT-LINK APP SETTINGS

MENU	SETTING	DESCRIPTION
Microphone	ON, OFF	Turns microphone ON/OFF
Speed Alerts	ON, OFF	Turns speed camera alerts ON/OFF
Loop Recording	1 & 3 Minutes	Loop recording allows you to set the duration that the camera will record before creating a new clip
Volume	Off, Low, Mid, High	Controls the sound level of the inbuilt speaker
G-Sensor	Off, High, Mid, Low	The G-Sensor monitors your vehicle for impact. The Dash Camera will automatically lock the recording in the event of a collision. You can turn off or adjust the sensitivity of the built in G-Sensor.
Parkmode*	ON, OFF	Activates Timelapse mode when the car is parked and the engine is turned OFF *Requires 3 wire hardwire kit Default: Off
Adjust Time	Day, Month, Year	Adjusts the time on the timestamp

KPT-LINK APP SETTINGS CONT'

MENU	SETTING	DESCRIPTION
Format SD Card	Formats the Micro SD Card.	Deletes all recorded data from the Micro SD Card
WiFi Settings	N/A	Change the Dash Camera's WiFi name and password from default
Factory Settings	N/A	Restore factory Settings
Help	N/A	FAQ
About DVR	N/A	Firmware version

12.0 WARRANTY TERMS & CONDITIONS

Our goods come with guarantees that cannot be excluded under the Australian Consumer Law.

You are entitled to a replacement or refund for a major failure and for compensation for any other reasonably foreseeable loss or damage. You are also entitled to have the goods repaired or replaced if the goods fail to be of acceptable quality and the failure does not amount to a major failure. This warranty is provided in addition to your rights under the Australian Consumer Law.

Directed Electronics Australia Pty Ltd (Directed Electronics) warrants that this product is free from defects in material and workmanship for a period of 12 months from the date of purchase or for the period stated on the packaging. This warranty is only valid where you have used the product in accordance with any recommendations or instructions provided by Directed Electronics.

This warranty excludes defects resulting from alterations of the product, accident, misuse, abuse or neglect. In order to claim the warranty, you must return the product to the retailer from which it was purchased or if that retailer is part of a National network, a store within that chain, along with satisfactory proof of purchase. The retailer will then return the goods to Directed Electronics.

Directed Electronics will repair, replace or refurbish the product at its discretion. The retailer will contact you when the product is ready for collection. All costs involved in claiming this warranty, including the cost of the retailer sending the product to Directed Electronics, will be borne by you.

Ph: +61 03 8331 4800 | Email: info@kapturecam.com.au

INDEMNITY

You agree to defend, indemnify and hold harmless Kapture and its subsidiaries and affiliates from and against any and all claims, proceedings, injuries, liabilities, losses, costs and expenses (including reasonable legal fees), including but not limited to, claims alleging negligence, invasion of privacy, copyright infringement and/or trademark infringement against Kapture and its subsidiaries and affiliates, relating to or arising out of your breach of any provision of these terms, your misuse of Kapture products or its services, or your unauthorised modification or alteration of products or software.

WARRANTY AND WARRANTY DISCLAIMER

Kapture has a limited warranty, whereby Kapture warrants to you and only to you that this Kapture product will be free from defects in materials and workmanship for one (1) year from the date of your purchase (unless a longer warranty period is required by law). The specifics of this Kapture limited warranty are covered in this manual. To the extent possible under governing law, other than the above product warranty for the Kapture product you understand and agree that the Kapture products and services are provided on an "as is" and "as available" basis. Kapture makes no warranty that the Kapture products and services will meet your requirements or that use of the Kapture products and services will be uninterrupted, timely, secure or error-free. Nor does Kapture make any warranty as to the accuracy or reliability of any information obtained through Kapture (including third party content), that any defects in the Kapture products or services be corrected or that the Kapture products or Kapture services will be compatible with any other specific hardware or service. Further, Kapture does not warrant that Kapture products

or services or Kapture servers that provide you with data and content are free of viruses or other harmful components. Kapture also assumes no responsibility for and shall not be liable, for any damages caused by viruses that may infect your Kapture product or software. In the event of any loss, damage or injury, you will not look to Kapture to compensate you or anyone else. You release and waive for yourself and your insurer all subrogation and other rights to recover against Kapture arising as a result of the payment of any claim for loss, damage or injury. Kapture equipment and services do not cause and cannot eliminate occurrences of certain events and Kapture makes no guarantee or warranty, including any implied warranty of merchantability or fitness for a particular purpose or that Kapture equipment and services provided will detect or avert such incidents or their consequences. Kapture does not undertake any risk that you or property, or the person or property of others, may be subject to injury or loss if such an event occurs. The allocation of such risk remains with you, not Kapture. Other than the above product warranty for Kapture products, its suppliers disclaim all warranties of any kind, whether express, implied, or statutory, regarding the Kapture products and services, including any implied warranty of title, merchantability, fitness for a particular purpose, or non-infringement of third party rights. Because some jurisdictions do not permit the exclusion of implied warranties, the last sentence of this section may not apply to you. Kapture hereby further expressly disclaims all liability for any claims for service failures that are due to normal product wear, product misuse, abuse, product modification, improper product selection or your noncompliance with all applicable federal, state or local laws. This warranty and warranty disclaimer give you specific legal rights, and you may have other rights that vary by state, province, or country. Other than as permitted by law, Kapture does not exclude, limit or suspend other

rights you have, including those that may arise from the nonconformity of a sales contract. For a full understanding of your rights, you should consult the laws of your state, province, or country.

For our Australian customers: Please note that this warranty is in addition to any statutory rights in Australia in relation to your goods which, pursuant to Australian Consumer Law, cannot be excluded.

LIMITATIONS OF KAPTURE LIABILITY

Under no circumstances will Kapture be liable in any way for any content, including, but not limited to, the loss of content, any errors or omissions in any content, or any loss or damage of any kind incurred in connection with use of or exposure to any content posted, emailed, accessed, transmitted, or otherwise made available via Kapture. Kapture liability for damages, especially for breach of duty or obligation, delay in performance, non-performance, or malperformance shall be precluded, except when these are due to negligent breaches of any significant contractual duty or obligation on the part of Kapture. Any liability for negligence is limited to direct losses usually and typically foreseeable in such case. Should the claim for damages be based on wilful or grossly negligent breach of contractual duty or obligation on the part of Kapture, the preclusion and limitation of liability mentioned in the preceding sentences will not Apply. The preceding preclusion and limitation of liability will also not Apply to claims for damages arising out of loss of life, bodily injury or health impacts for which Kapture may be liable, or for non-contractual liability.

Some states and countries do not allow the exclusion or limitation of incidental or consequential damages, so the above limitation or exclusion may not Apply to you. Additionally, this provision is not intended to limit Kapture's liability in the event of Kapture's wilful or intentional misconduct.

13.0 NOTES





YOUR EYEWITNESS ON THE ROAD™



 kapture

ANOTHER
DIRECTED
BRAND

All Images, Information and Content are Copyright © 2022
Directed Electronics Australia Pty Ltd. All Rights Reserved.
www.kapturecam.com.au | www.kapturecam.co.nz

DIRECTED
AUSTRALIA & NZ

www.directed.com.au
www.directed.co.nz